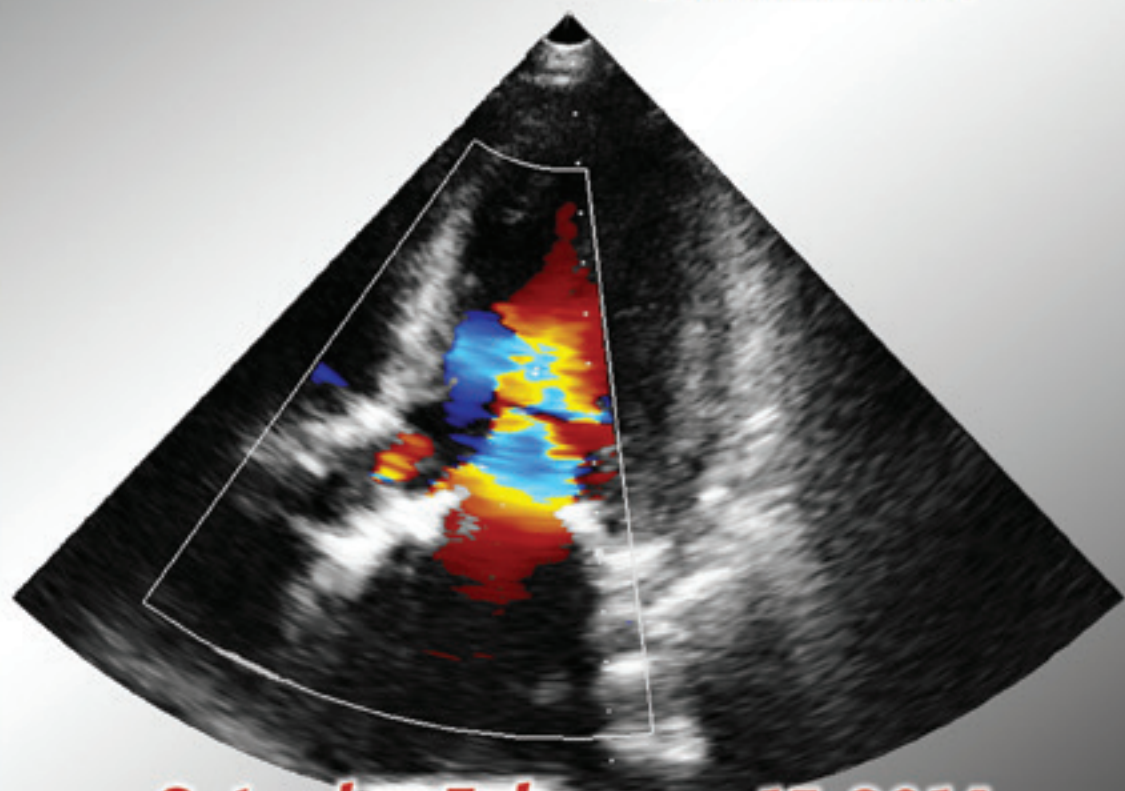


Advanced Imaging in **TAVI**

at **JIM 2014**
joint interventional meeting



Saturday February 15, 2014
Ergife Palace Hotel
Rome, Italy



COLUMBIA UNIVERSITY
MEDICAL CENTER



Deutsches Herzzentrum München
des Freistaates Bayern
Klinik an der Technischen Universität München

Advanced Imaging in TAVI

Program Directors

Antonio Colombo, MD
Milan, Italy

Markus Kasel, MD
Munich - Augsburg, Germany

Martin B. Leon, MD
New York, NY - USA

Eberhard Grube, MD
Bonn, Germany

Susheel K. Kodali, MD
New York, NY – USA

Program

- 14.30 *Registration*
- 15.00 - 15.20 Anatomy of the aortic valve complex – What the interventionalist needs to know **Nicolo Piazza, MD**
- 15.20 - 15.35 Basics of multi-detector CT: basic principles, imaging protocols, analysis tools and beyond **Susheel Kodali, MD**
- 15.35 - 15.55 CT assessment of the aortic annulus: what measurements are important and how to obtain **Markus Kasel, MD**
- 15.55 - 16.15 Echo assessment of aortic annulus: role of 3D echo with demonstration of novel technique for making measurements **Christoph Hammerstingl, MD**
- 16.15 - 16.50 Challenges in sizing with case scenarios
Susheel Kodali, MD and **Antonio Colombo, MD**
Panel: Azeem Latib, MD - Markus Kasel, MD - Eustachio Agricola, MD
- Severe LVOT calcification
 - Small STJ and porcelain aorta
 - Severe eccentricity
 - Effaced sinuses
- 16.50 - 17.00 *Break*

Procedural Considerations

- 17.00 - 17.12 Managing vascular access complications: tips and tricks for managing potentially catastrophic vascular injury including severe tortuosity, calcification, aneurysms and dissections with case examples
Azeem Latib, MD
- 17.12 - 17.24 Finding an ideal deployment view: review of available techniques
Georg Nickenig, MD
- 17.24 - 17.36 Assessment of paravalvular leak following TAVR: review of methodology for assessing severity including hemodynamic, echocardiographic and angiographic criteria **Eustachio Agricola, MD**
- 17.36 - 17.48 Techniques for managing significant paravalvular regurgitation
Susheel Kodali, MD
- 17.48 - 17.55 Discussion
- 17.55 - 18.40 Complex clinical scenarios
Eberhard Grube MD and **Martin Leon MD**
Panel: Martyn Thomas, MD - Georg Nickenig, MD - Nicolo Piazza, MD
- Coronary obstruction – Assessing risk and managing events
 - Small annulus – Does valve choice matter?
 - Bicuspid valves – Can they be done?
 - Horizontal aorta – Tips and tricks for crossing and positioning
 - Prior mitral valve replacement – Considerations for TAVR
 - Annular rupture – Treatment with valve in valve
- 18.40 - 19.00 Role of preoperative and intra-procedural imaging for valve in valve therapy
Martyn Thomas, MD
- 19.00 *Closing remarks*

Advanced Imaging in TAVI

Saturday, February 15, 2014

**Room Tiziano (floor -1)
Ergife Palace Hotel
Rome, Italy**

Registration

Registration is compulsory.
Registration fee is € 110 (vat included)
to be paid on line on www.jim-vascular.com
or sending an e-mail to the Organizing Secretariat.

Organizing Secretariat

Victory Project Congressi srl
Via C. Poma, 2 – 20129 Milan, Italy
Tel +39 02 89 05 35 24 • Fax +39 02 20 13 95
e-mail: info@victoryproject.it

Congress Venue

Ergife Palace Hotel
Via Aurelia, 619
00165 Rome, Italy
Tel +39 06 66 441