

**Final Program**



**JIM**

*joint interventional meeting*

**2014**

*international meeting*

**February 13 - 15, 2014**  
**Rome, Italy**

- **Interventional Cardiology  
Live Cases**
- **Advanced and Basic  
Workshops**

**Course  
Directors**

Antonio Colombo, MD  
Eberhard Grube, MD  
Martin B. Leon, MD  
Carlo Di Mario, MD  
Jeffrey W. Moses, MD  
Gregg W. Stone, MD



In Partnership with the ACC  
**Reinventing the Future  
Every Year**

**[www.jim-vascular.com](http://www.jim-vascular.com)**

## ***Faculty Members***

### **Course Directors**

**Antonio COLOMBO, MD**  
**Eberhard GRUBE, MD**  
**Martin B. LEON, MD**  
**Carlo DI MARIO, MD**  
**Jeffrey W. MOSES, MD**  
**Gregg W. STONE, MD**

### **Associate Directors**

**Alexandre ABIZAID, MD**  
**Eulogio J. GARCIA, MD**  
**Osamu KATOH, MD**  
**Kazuaki MITSUDO, MD**  
**Christoph NABER, MD**  
**Seung JUNG PARK, MD**

### **Live Satellite Transmissions**

From **Milan**



From **Bonn**



From **London**



### **Presented by**

**ST. RAFFAELE SCIENTIFIC INSTITUTE**  
Milan, Italy

**UNIVERSITY HOSPITAL BONN**  
Bonn, Germany

**COLUMBUS HOSPITAL HEART CENTER**  
Milan, Italy

**ROYAL BROMPTON & HAREFIELD NHS TRUST**  
London, UK

## **Useful Addresses**

### **Course Coordinator**

---

**Marina Schenetti**

e-mail                      schemar50@gmail.com

### **Organizing Secretariat**

---

**Victory Project Congressi**

Via C. Poma, 2

20129 Milan • Italy

Phone                      +39 02 89 05 35 24

Fax                         +39 02 20 13 95

e-mail                      info@victoryproject.it

### **Congress Venue**

---

**Ergife Palace Hotel**

Via Aurelia, 619

00165 Rome • Italy

Phone                      +39 06 66 441

www.ergifepalacehotel.com

**[www.jim-vascular.com](http://www.jim-vascular.com)**

**( Program updated to  
January 31<sup>st</sup> 2014 )**

## Welcome

*We are very pleased to welcome you in Rome*



### **This year we will give the usual emphasis to live cases.**

We will demonstrate what we mean for optimal implantation of a drug eluting stent. Ultimately we believe that this strategy will further improve the safety and performance of these devices.

Live demonstrations will include treatment of adult valvular heart disease, structural heart disease and selected peripheral interventions.

The meeting maintains its format with "State of the Art" lectures given by experts in the field. Lunch and evening symposia fulfil this target.

This year we have again live transmission on Saturday morning in order to maintain a well-balanced distribution of live cases throughout the entire meeting.

More emphasis and expansion are given to those sessions in which attendees can present and discuss cases.

Once again the Meeting will take place in Rome at Ergife Palace Hotel. It combines a comfortable accommodation solution with a large and efficient Congress Centre.

*Antonio Colombo, MD  
Eberhard Grube, MD*

## Invited Faculty

**ALEXANDRE ABIZAID, MD**  
Sao Paulo - Brazil

**YARON ALMAGOR, MD**  
Jerusalem - Israel

**DAVID ANTONIUCCI, MD**  
Florence - Italy

**MARTIN W. BERGMANN, MD**  
Hamburg - Germany

**LEONARDO BOLOGNESE, MD**  
Arezzo - Italy

**ALESSANDRO S. BORTONE, MD**  
Bari - Italy

**CARLO BRIGUORI, MD**  
Naples - Italy

**TODD BRINTON, MD**  
Stanford, CA - USA

**MAURICE BUCHBINDER, MD**  
La Jolla, CA - USA

**LUTZ BUELLESELD, MD**  
Bern - Switzerland

**GIULIANO CHIZZOLA, MD**  
Brescia - Italy

**GIAN BATTISTA DANZI, MD**  
Pietra Ligure, SV - Italy

**LEONARDO DE LUCA, MD**  
Rome - Italy

**FEDERICO DE MARCO, MD**  
Milan - Italy

**STEFANO DE SERVI, MD**  
Legnano, MI - Italy

**ROBBERT DE WINTER, MD**  
Amsterdam - The Netherlands

**PATRICK DIEMERT, MD**  
Hamburg - Germany

**CARLO DI MARIO, MD**  
London - UK

**ERTAN DOGU, MD**  
Bremen - Germany

**JAVIER ESCANED, MD**  
Madrid - Spain

**RODRIGO ESTEVEZ LOURIERO, MD**  
Leon - Spain

**TED FELDMAN, MD**  
Evanston, IL - USA

**LEO FINCI, MD**  
Geneva - Switzerland

**ANTONIO FISCELLA, MD**  
Catania - Italy

**OMER GOKTEKIN, MD**  
Istanbul - Turkey

**STEVEN GOLDBERG, MD**  
Seattle, WA - USA

**GIULIO GUAGLIUMI, MD**  
Bergamo - Italy

**SUSHEEL K. KODALI, MD**  
New York, NY - USA

**JEAN CLAUDE LABORDE, MD**  
London - UK

**AZEEM LATIB, MD**  
Milan - Italy

**THIERRY LEFÈVRE, MD**  
Massy - France

**PEDRO LEMOS, MD**  
Sao Paulo - Brazil

**MARTIN B. LEON, MD**  
New York, NY - USA

**UGO LIMBRUNO, MD**  
Grosseto - Italy

**FRANCESCO MAISANO, MD**  
Zurich - Switzerland

**SEBASTIANO MARRA, MD**  
Turin - Italy

**ROXANA MEHRAN, MD**  
New York, NY - USA

**OSCAR MENDIZ, MD**  
Buenos Aires - Argentina

**GHADA MIKHAIL, MD**  
London - UK

**HELGE MÖLLMANN, MD**  
Bad Nauheim - Germany



# Faculty Members

## Invited Faculty

**MARIE CLAUDE MORICE, MD**  
Massy - France

**JEFFREY W. MOSES, MD**  
New York, NY - USA

**GIUSEPPE MUSUMECI, MD**  
Bergamo - Italy

**CHRISTOPH NABER, MD**  
Essen - Germany

**SUNAO NAKAMURA, MD**  
Tokyo - Japan

**GEORG NICKENIG, MD**  
Bonn - Germany

**SEUNG-JUNG PARK, MD**  
Seoul - Korea

**NICOLO PIAZZA, MD**  
Montreal - Canada

**AUGUSTO PICHARD, MD**  
Washington, DC - USA

**ALEXANDER PLEHN, MD**  
Halle - Germany

**JEFFREY POPMA, MD**  
Boston, MA - USA

**FRANCESCO PRATI, MD**  
Rome - Italy

**PATRIZIA PRESBITERO, MD**  
Milan - Italy

**BERNHARD REIMERS, MD**  
Mirano, VE - Italy

**HANNES REUTER, MD**  
Koln - Germany

**RAFAEL ROMAGUERA, MD**  
Barcelona - Spain

**TANJA RUDOLPH, MD**  
Koln - Germany

**GIUSEPPE MASSIMO SANGIORGI, MD**  
Rome - Italy

**GENNARO SARDELLA, MD**  
Rome - Italy

**FILIPPO SCALISE, MD**  
Monza - Italy

**JOACHIM SCHOFER, MD**  
Hamburg - Germany

**HORST SIEVERT, MD**  
Frankfurt - Germany

**MOHAMED AHMED SOBHY, MD**  
Alexandria - Egypt

**RONALD JAY SOLAR, MD**  
San Diego, CA - USA

**GORAN STANKOVIC, MD**  
Belgrade - Serbia

**GREGG W. STONE, MD**  
New York, NY - USA

**CORRADO TAMBURINO, MD**  
Catania - Italy

**GIUSEPPE TARANTINI, MD**  
Padua - Italy

**MARTYN THOMAS, MD**  
London - UK

**JONATHAN TOBIS, MD**  
Los Angeles, CA - USA

**FABRIZIO TOMAI, MD**  
Rome - Italy

**HENDRIK TREEDE, MD**  
Hamburg - Germany

**FRANCESCO VERSACI, MD**  
Rome - Italy

**MARCO WAINSTEIN, MD**  
Porto Alegre - Brazil

**RON WAKSMAN, MD**  
Washington, DC - USA

## Patronages



**SOCIETÀ ITALIANA DI CARDIOLOGIA**



**SOCIETÀ ITALIANA DI CARDIOLOGIA INVASIVA**



**DEUTSCHE GESELLSCHAFT FÜR KARDIOLOGIE  
HERZ - UND KREISLAIFFORSCHUNG**



**BNK - BUNDESVERBAND NIEDERGELASSENER  
KARDIOLOGEN**



**ARBEITSGEMEINSCHAFT LEITENDE  
KARDIOLOGISCHE KRANKENHAUSÄRZTE**

---

**FONDAZIONE GISE**

Scuola di Formazione Superiore di Interventistica Cardiovascolare

## Faculty Members

### Columbus Hospital Heart Center, Milan

#### **FACULTY AND OPERATORS**

Antonio Colombo, MD

Bruno Damascelli, MD

Filippo Figini, MD

Leo Finci, MD

Azeem Latib, MD

Gloria Melzi, MD

Vladimira Ticha, MD

#### *Fellow and Research Associates*

Tadashi Miyazaki, MD

Toru Naganuma, MD

Vasilis Panoulas, MD

Katsumasa Sato, MD

#### *Cardiology and Intensive*

#### *Coronary Care Sections*

Raffaella Alpago, MD

Giancarlo Biagi, MD

Alfredo Castelli, MD

Federica Della Rocca, MD

#### **ANAESTHESIOLOGY DEPARTMENT**

Romeo Arienta, MD

Massimo Croci, MD

Stefano Fattore, MD

Pierluigi Villa, MD

### University Hospital, Bonn

#### **FACULTY AND OPERATORS**

Eberhard Grube, MD

Christoph Hammerstingl, MD

Georg Nickenig, MD

Jan Malte Sinning, MD

Mariuca Vasa-Nicotera, MD

Nikos Werner, MD

#### **CARDIOVASCULAR SURGERY DEPARTMENT**

Armin Welz, MD

Fritz Mellert, MD

Wolfgang Schiller, MD

#### **ANAESTHESIOLOGY DEPARTMENT**

Andreas Hoeft, MD

Stefan Weber, MD





# Faculty Members

## St. Raffaele Scientific Institute, Milan

### FACULTY AND OPERATORS

Antonio Colombo, MD

Mauro Carlino, MD

Alfredo Castelli, MD

Alaide Chieffo, MD

Filippo Figini, MD

Azeem Latib, MD

Matteo Montorfano, MD

### Fellows and Research Associates

Georgina Fuertes, MD

Gennaro Giustino, MD

Tadashi Miyazaki, MD

Toru Naganuma, MD

Vasilis Panoulas, MD

Katsumasa Sato, MD

Paola Spatuzza, MD

### CARDIOTHORACIC DEPARTMENT

Ottavio Alfieri, MD - Section Director

Stefano Benussi, MD

Andrea Blasio, MD

Alessandro Castiglioni, MD

Micaela Cioni, MD

Michele De Bonis, MD

Paolo Denti, MD

David Ferrara, MD

Andrea Fumero, MD

Giuseppe Iaci, MD

Giovanni La Canna, MD

Elisabetta La Penna, MD

Stefano Moriggia, MD

Simona Nascimbene, MD

Maria Grazia Pala, MD

Alessandra Rossodivita, MD

Maurizio Taramasso, MD

Alessandro Verzini, MD

### Cardiology and Intensive

### Coronary Care Sections

Alberto Margonato, MD - Section Director

Eustachio Agricola, MD

Carlo Ballarotto, MD

Alberto Cappelletti, MD

Andrea Conversano, MD

Cosmo Godino, MD

Valeria Magni, MD

Michele Opizzi, MD

Giuseppe Pizzetti, MD

### Vascular Surgery Section

Roberto Chiesa, MD - Section Director

Domenico Astore, MD

Renata Castellano, MD

Efrem Civilini, MD

Laura Dordoni, MD

Gloria Esposito, MD

Enrico Maria Marone, MD

Massimiliano Marrocco Trischitta, MD

Germano Melissano, MD

Yamume Tshomba, MD

### Anaesthesiology and

### Cardiovascular Intensive Care Section

Alberto Zangrillo, MD - Section Director

Elena Bignami, MD

Tiziana Bove, MD

Remo Daniel Covello, MD

Annalisa Franco, MD

Chiara Gerli, MD

Giulia Maj, MD

Federico Pappalardo, MD

Mara Scandroglio, MD

## MAIN HALL LEONARDO

8.15 - 8.20

### Welcome and Opening Address

Chairman: **Martin B. Leon**

Co-chairman: **Carlo Di Mario**

8.20 - 10.00



### LIVE CASES FROM BONN, GERMANY University Hospital

*Commentators:* Ted Feldman, Thierry Lefèvre, Oscar Mendiz, Joachim Schofer, Mohamed Ahmed Sobhy

*Operators:* Eberhard Grube, Georg Nickenig, Nikos Werner, Jan-Malte Sinning, Christoph Hammerstingl, Mariuca Vasa-Nicotera, Armin Welz, Fritz Mellert, Wolfgang Schiller

*Guest operators:* Maurice Buchbinder, Pedro Lemos, Marco Wainstein

*On-line factoids relevant to the cases presented:*

**Filippo Figini** (Coordinator), Toru Naganuma, Vasilis Panoulas

10.00 - 10.30

*Coffee break*

10.30 - 12.30



### LIVE CASES FROM MILAN, ITALY St. Raffaele Scientific Institute

*Commentators:* Alexandre Abizaid, Leonardo Bolognese, Jean Claude Laborde, Francesco Maisano, Augusto Pichard

*Operators:* Antonio Colombo, Mauro Carlino, Alaide Chieffo, Azeem Latib, Matteo Montorfano

*Guest operator:* Patrick Diemert

*On-line factoids relevant to the cases presented:*

**Filippo Figini** (Coordinator), Toru Naganuma, Vasilis Panoulas

12.45 - 14.15

**Working Lunch** .....

12.45 - 14.15

## Lunch Symposium - ROOM MICHELANGELO

### INNOVATIONS IN CORONARY INTERVENTIONS (PART 1)

Chairmen: **Christoph Naber, Patrizia Presbitero**

- 12.45 DES, bleeding risk and the "non-comers" population - insights into the LEADERS FREE trial **Marie Claude Morice**
- 12.57 Latest DES from Terumo. Clinical update **David Antoniucci**
- 13.09 COMBO dual therapy stent – setting the new standard of stenting **Robbert de Winter**
- 13.21 Medtronic DES solutions. What we need from a DES **David Antoniucci**
- 13.33 First experience with a rapid exchange FFR catheter **Thierry Lefèvre**
- 13.45 Drug eluting balloon to treat in-stent restenosis: experience with Elutax **Alessandro S. Bortone**
- 13.57 Questions & Answers

12.45 - 14.15

## Lunch Symposium - ROOM TIZIANO

### PHARMACOLOGY FOR INTERVENTIONISTS

Chairmen: **Stefano De Servi, Goran Stankovic**

- 12.45 Direct antithrombotic therapy in STEMI and NSTEMI patients undergoing invasive treatment **Gennaro Sardella**
- 13.05 Importance of a fast and full platelet blockade in high risk ACS **Leonardo Bolognese**
- 13.25 Treatment as soon as possible in ACS patient: why pre-treatment? **Leonardo De Luca**
- 13.45 Medical therapy to optimize PCI: clinical results **Giuseppe Musumeci**
- 14.05 Questions & Answers

12.45 - 14.15

## Lunch Symposium - ROOM GIOTTO

### TAVI (PART 1)

Chairmen: **Augusto Pichard, Joachim Schofer**

- 12.45 Is TAVI with SAPIEN 3 the best alternative to surgical aortic valve replacement? **Giuseppe Tarantini**
- 13.05 The JenaValve TAVI Systems: transapical and transfemoral experience **Tanja Rudolph**
- 13.25 The 1st 1000 ACURATE TA™ implants: a retrospective **Hendrik Treede**
- 13.35 Design translated into performance: introducing ACURATE TF™ **Helge Möllmann**
- 13.45 REPRISE Study update: clinical experience with the LOTUS aortic valve replacement system **Nicolo Piazza**
- 14.05 Questions & Answers

**MAIN HALL LEONARDO**

Chairman: **Martin B. Leon**

Co-chairman: **Carlo Di Mario**

14.30 - 16.30



**LIVE CASES FROM MILAN, ITALY**

**St. Raffaele Scientific Institute**

*Commentators:* **Jeffrey W. Moses, Jeffrey Popma, Goran Stankovic, Corrado Tamburino, Martyn Thomas**

*Operators:* **Antonio Colombo, Mauro Carlino, Alaide Chieffo, Azeem Latib, Matteo Montorfano**

*On-line factoids relevant to the cases presented:*

**Filippo Figini (Coordinator), Gennaro Giustino, Toru Naganuma**

16.30 - 17.00

*Coffee break*

17.00 - 18.30



**LIVE CASES FROM BONN, GERMANY**

**University Hospital**

*Commentators:* **Yaron Almagor, Gian Battista Danzi, Christoph Naber, Seung-Jung Park, Augusto Pichard**

*Operators:* **Eberhard Grube, Georg Nickenig, Nikos Werner, Jan-Malte Sinning, Christoph Hammerstingl, Mariuca Vasa-Nicotera, Armin Welz, Fritz Mellert, Wolfgang Schiller**

*Guest operators:* **Maurice Buchbinder, Pedro Lemos, Marco Wainstein**

*On-line factoids relevant to the cases presented:*

**Filippo Figini (Coordinator), Gennaro Giustino, Toru Naganuma**

18.45 - 20.30

***Evening Symposia*** .....

18.45 - 20.30

## Evening Symposium - ROOM MICHELANGELO



In Partnership with the ACC

Reinventing the Future  
Every Year

### HIGHLIGHTS FROM TCT 2013: THE 25<sup>TH</sup> YEAR ANNIVERSARY

Chairmen: **Martin B. Leon, Roxana Mehran, Jeffrey W. Moses, Gregg W. Stone**

#### 18.45 - 19.20 **Session I** Coronary Artery Disease:

##### **STEMI Patient Management Controversies - Unmet Needs in 2013**

- Case Presentation **Roxana Mehran**
- Thoughtful Commentary: A View to HORIZONS II **Gregg W. Stone**
- Animated Discussion

*Moderator:* **Jeffrey W. Moses**

*Discussants:* **Giulio Guagliumi, Oscar Mendiz**

#### 19.20 - 19.55 **Session II** Transcatheter Valve Therapy (Aortic): **How Close to a "Mainstream" Treatment?**

- Complex Case Presentation **Roxana Mehran**
- Thoughtful Commentary: TAVI Update 2013: Advances and Limitations - What's next? **Martin B. Leon**
- Animated Discussion

*Moderator:* **Martyn Thomas**

*Discussants:* **Jean Claude Laborde, Francesco Maisano, Jeffrey Popma, Corrado Tamburino**

#### 19.55 - 20.30 **Session III** Left Main and Bifurcation Therapy: **Technical Challenges and Controversies**

- Case Presentation **Roxana Mehran**
- Thoughtful Commentary: Clinical Indications and Preferred Technique for Left Main PCI **Seung-Jung Park**
- Animated Discussion

*Moderator:* **Marie Claude Morice**

*Discussants:* **Alexandre Abizaid, Martin B. Leon, Augusto Picard, Gregg W. Stone**

*A cocktail will be served during the Symposium*

*Check the STEMI symposium on the following page!*



**Thursday, February 13<sup>th</sup>, 2014**

18.45 - 20.30

**Evening Symposium - ROOM GIOTTO**

**NEW HORIZONS FOR STEMI THERAPY**

endorsed by **Centro per la Lotta contro  
l'Infarto - Fondazione ONLUS**



Chairmen: **Francesco Prati, Francesco Versaci**

- 18.45 How to choose the ideal stent **Fabrizio Tomai**
- 18.58 Can we avoid target lesion stenting? **Francesco Prati**
- 19.11 The contradictory results of thrombus-aspiration **David Antoniucci**
- 19.24 The local drug delivery of abciximab: rationale and clinical data  
**Ugo Limbruno**
- 19.37 Therapeutic alternatives to intracoronary thrombus: the MASTER  
results in perspective **Yaron Almagor**
- 19.50 Self expanding stenting during AMI. Rational and clinical results  
**Giuseppe Massimo Sangiorgi**
- 20.03 Hypothermia in AMI **Ronald Jay Solar**
- 20.16 *Questions & Answers*

*A cocktail will be served during the Symposium*



**Save the date!**

**First Announcement**



**JIM**  
joint interventional meeting  
**2015**  
international meeting  
February 12 - 14, 2015  
Rome, Italy

**Course Directors**

Antonio Colombo, MD  
Eberhard Grube, MD  
Martin B. Leon, MD  
Carlo Di Mario, MD  
Jeffrey W. Moses, MD  
Gregg W. Stone, MD

- Interventional Cardiology Live Cases
- Advanced and Basic Workshops

**www.jim-vascular.com**

**MAIN HALL LEONARDO**

Chairman: **Gregg W. Stone**

Co-chairman: **Alexandre Abizaid**

8.00 - 10.00



**LIVE CASES FROM MILAN, ITALY**  
**Columbus Hospital Heart Center**

*Commentators:* **Antonio Fiscella, Omer Goktekin,  
Giulio Guagliumi, Marie Claude Morice, Joachim Schofer**

*Operators:* **Antonio Colombo, Azeem Latib, Gloria Melzi**

*Guest operator:* **Sunao Nakamura**

*On-line factoids relevant to the cases presented:*

**Alaide Chieffo (Coordinator), Gennaro Giustino, Vasilis Panoulas**

10.00 - 10.30

*Coffee break*

10.30 - 12.30



**LIVE CASES FROM BONN, GERMANY**  
**University Hospital**

*Commentators:* **Lutz Buellesfeld, Gennaro Sardella,  
Horst Sievert, Ron Waksman**

*Operators:* **Eberhard Grube, Georg Nickenig, Nikos Werner,  
Jan-Malte Sinning, Christoph Hammerstingl,  
Mariuca Vasa-Nicotera, Armin Welz, Fritz Mellert,  
Wolfgang Schiller**

*Guest operators:* **Maurice Buchbinder, Pedro Lemos,  
Marco Wainstein**

*On-line factoids relevant to the cases presented:*

**Alaide Chieffo (Coordinator), Gennaro Giustino, Vasilis Panoulas**

12.45 - 14.15

**Working Lunch**



12.45 - 14.15

**Lunch Symposium - ROOM MICHELANGELO**

**INNOVATIONS IN CORONARY INTERVENTIONS (PART 2)**

*Chairmen:* **Marie Claude Morice, Francesco Prati**

- 12.45 Our experience with Noval Design - BIOMIME 1500 stents **Ertan Dogu**
- 12.57 Axxess dedicated bifurcation DES: simple steps for great success in complex situations **Carlo Briguori**
- 13.09 The crystal ball: moving from simple to complex lesions with BVS **Corrado Tamburino**
- 13.21 The SYNERGY bioabsorbable polymer stent: optimizing vessel healing following DES implantation **Javier Escaned**
- 13.33 Self-apposing stents: role and place in today's cath lab armamentarium **Francesco Prati**
- 13.45 Efficacy & safety challenges in diabetes: the Cre8 unique DES technology **Rafael Romaguera**
- 13.57 *Questions & Answers*

12.45 - 14.15

**Lunch Symposium - ROOM TIZIANO**

**MITRAL**

*Chairmen:* **Ted Feldman, Joachim Schofer**

- 12.45 Current status of transcatheter valve replacement **Martyn Thomas**
- 13.00 Cardioband percutaneous direct mitral annuloplasty: the ultimate solution **Francesco Maisano**
- 13.15 Applications for mitral and tricuspid diseases **Alexandre Abizaid**
- 13.30 Initial results from the TITAN II EU multicentre study **Steven Goldberg**
- 13.45 MitraClip after 15.000 patients treated: which role in the mitral space **Francesco Maisano**
- 14.00 *Questions & Answers*

12.45 - 14.15

**Lunch Symposium - ROOM GIOTTO**

**TAVI (PART 2)**

*Chairmen:* **Jean Claude Laborde, Augusto Pichard**

- 12.45 TAVI today and tomorrow and message for CoreValve randomized trial **Jeffrey Popma**
- 13.05 Improving patient outcomes and procedure control: the Direct Flow Medical system approach **Federico De Marco**
- 13.25 How I handle my worst TAVR complication **Augusto Pichard**
- 13.45 Shockwave medical **Todd Brinton**
- 14.05 *Questions & Answers*



**MAIN HALL LEONARDO**

Chairman: **Jeffrey Popma**

Co-chairman: **Jeffrey Moses**

14.30 - 16.00



**LIVE CASES FROM MILAN, ITALY**  
**Columbus Hospital Heart Center**

*Commentators:* **Susheel K. Kodali, Jean Claude Laborde,  
Patrizia Presbitero, Bernhard Reimers**

*Operators:* **Antonio Colombo, Bruno Damascelli, Azeem Latib,  
Gloria Melzi**

*On-line factoids relevant to the cases presented:*

**Alaide Chieffo (Coordinator), Toru Naganuma, Vasilis Panoulas**

16.00 - 16.30

*Coffee break*

16.30 - 18.00



**LIVE CASES FROM BONN, GERMANY**  
**University Hospital**

*Commentators:* **David Antoniucci, Carlo Briguori, Ted Feldman,  
Seung-Jung Park, Horst Sievert**

*Operators:* **Eberhard Grube, Georg Nickenig, Nikos Werner,  
Jan-Malte Sinning, Christoph Hammerstingl,  
Mariuca Vasa-Nicotera, Armin Welz, Fritz Mellert,  
Wolfgang Schiller**

*Guest operators:* **Maurice Buchbinder, Pedro Lemos,  
Marco Wainstein**

*On-line factoids relevant to the cases presented:*

**Alaide Chieffo (Coordinator), Toru Naganuma, Vasilis Panoulas**

18.15 - 20.30

***Evening Symposia*** .....



18.15 - 20.30

## Evening Symposium - ROOM MICHELANGELO

### RENAL DENERVATION

Chairmen: **Martin B. Leon, Horst Sievert**

- 18.15 Non-invasive focused ultrasound for renal denervation: a paradigm shift in approach to the patient with HTN **Todd Brinton**
- 18.30 New Symplicity Spyral catheter-based renal sympathetic denervation system **Alexander Plehn**
- 18.45 Pre-clinical and clinical experience with the Paradise Ultrasound System for renal denervation **Horst Sievert**
- 19.00 The VESSIX clinical programme. Current insights, future directions **Martin B. Leon**
- 19.15 The helical open-irrigated approach: from concept to proof **Hannes Reuter**
- 19.30 First CE marked irrigated RF balloon. Experience and clinical data on treating resistant hypertension **Martin W. Bergmann**
- 19.45 Advancing the practice of medicine through evidence-based approach: the EnligHTN system and a review of the clinical program **Filippo Scalise**
- 20.00 Vascular response to renal denervation **Francesco Versaci**
- 20.15 *Questions & Answers*

*A cocktail will be served during the Symposium*

18.15 - 20.30

## Evening Symposium - ROOM GIOTTO

### BIOABSORBABLE SCAFFOLDS: CASE REVIEW

Chairmen: **Christoph Naber, Ron Waksman**

- 18.15 Elixir medical DESolve scaffold: case reviews **Alexandre Abizaid**
- 18.35 Update in Absorb studies **Christoph Naber**
- 18.55 Mini debate:
  - Absorb is needed **Corrado Tamburino**
  - We do not need Absorb stents **Goran Stankovic**
- 19.35 Excimer laser to optimize stent expansion **Giuliano Chizzola**
- 19.55 *Questions & Answers*

*A cocktail will be served during the Symposium*

# Saturday, February 15<sup>th</sup>, 2014

## MAIN HALL LEONARDO

Chairmen of the day: **Antonio Colombo, Eberhard Grube**

8.00 - 8.45

### TWO SELECTED TAPED CASES

*Presented by* **Georg Nickenig & Azeem Latib**

*Commented by* **Antonio Colombo & Eberhard Grube**

8.45 - 9.10

**Keynote Lecture** - Impact of FFR in real practice, changes of outcomes in PCI and treatment for 3-vessel and left main disease **Seung-Jung Park**

9.10 - 10.10



### LIVE CASES FROM LONDON, UK

#### **Royal Brompton & Harefield NHS Trust**

*Commentators:* **Rodrigo Estevez Louriero, Sebastiano Marra, Marie Claude Morice, Sunao Nakamura, Francesco Versaci**

*Operators:* **Carlo Di Mario, Ranil De Silva, Robert Gerber, Tito Kabir, James Yeh, Nikolaos Konstantinidis, Michele Pighi, Ismail Dogu Kilic**

*On-line factoids relevant to the cases presented:*

**Alaide Chieffo** (*Coordinator*), **Gennaro Giustino, Vasilis Panoulas**

10.10 - 11.25

### CASES PRESENTATION

*Presented by the Guest Faculty and Attendants*

*Chairmen:* **Antonio Colombo, Eberhard Grube**

**Manan Anand**

Amristar - India

**Maurizio D'Amico**

Turin - Italy

**Majid Dehghani**

Tehran - Iran

**Mohammad Ghaffaripour**

Tehran - Iran

**Ioannis Iakovou**

Athens - Greece

**Jorgo Kostov**

Skopje - Macedonia

**Gregory Sgueglia**

Rome - Italy

## Saturday, February 15<sup>th</sup>, 2014

11.25 - 12.30



### **LIVE CASES FROM LONDON, UK** **Royal Brompton & Harefield NHS Trust**

*Commentators:* Ghada Mikhail, Francesco Prati,  
Joachim Schofer, Jonathan Tobis, Ron Waksman

*Operators:* Carlo Di Mario, Ranil De Silva, Robert Gerber, Tito Kabir,  
James Yeh, Nikolaos Konstantinidis, Michele Pighi, Ismail Dogu Kilic

*On-line factoids relevant to the cases presented:*

**Alaide Chieffo (Coordinator), Gennaro Giustino, Vasilis Panoulas**

12.30

***Closing remarks and JIM 2015 announcement***



## Poster Session

### JIM 2014 Scientific Committee has selected the following posters:

**P1.** Rebuilding LAD is it a good idea?

Bilal Mohyidin

**P2.** The optimal timing of percutaneous coronary intervention for non-culprit vessel in acute myocardial infarction patients with multivessel disease

Inna Kim, Hae Chang Jeong, Keun Ho Park, Doo Sun Sim, Young Joon Hong, Ju Han Kim, Myung Ho Jeong, Youngkeun Ahn

**P3.** A new score system for decision making during percutaneous coronary intervention in acute myocardial infarction patients with multivessel disease

(The CATHolic and CHONnam university hospital registry [CATCH-ON] score)

Hae Chang Jeong, Youngkeun Ahn, Myung Ho Jeong, Ki-Yuk Jang, Seung-Ki Bae, Ju Han Kim, Young Joon Hong, Doo Sun Sim, Keun Ho Park

**P4.** Real world renal artery denervation for treatment of resistant hypertension, a single tertiary center study

Ahmed Farah

**P5.** Predicting the post-procedural hospitalisation duration after transcatheter aortic valve implantation

Geenen LME, Wiegierinck EM, Baan J Jr, Koch KT, Bouma BJ, Vis MM

**P6.** Tardive coronary occlusion by a native leaflet after transcatheter aortic valve implantation in a patient with heavily calcified aortic valve stenosis

Gennaro Giustino, Matteo Montorfano, Alaide Chieffo, Vasileios Panoulas, Pietro Spagnolo, Azeem Latib, Annalisa Franco, Remo Daniel Covello, Micaela Cioni, Ottavio Alfieri, Antonio Colombo

**P7.** First case reported of transcatheter aortic valve implantation (TAVI) in a patient affected by fabry's disease and severe low-flow low-gradient aortic valve stenosis

Gennaro Giustino, Alaide Chieffo, Matteo Montorfano, Chiara Bernelli, Pietro Spagnolo, Azeem Latib, Remo Daniel Covello, Ottavio Alfieri, Antonio Colombo

**P8.** Pulse wave velocity is an independent risk factor for coronary artery disease in koreans

Soon Jun Hong, Sungyang Jo, Do-Sun Lim

## Poster Session

**P9.** Primary percutaneous coronary intervention in nonagenarians with ST-segment elevation myocardial infarction: temporal trends and in-hospital outcomes results from the Korea acute myocardial infarction registry

Joon Young Kim, Myung Ho Jeong, Yong keun Ahn, Jung Hoon Sung and other Korea Acute Myocardial Infarction Registry Investigators

**P10.** Therapeutic strategy for AMI with massive intracoronary thrombus; is the adjunctive intracoronary thrombolytic therapy in primary PCI effective?

Hideki Miyachi, Takeshi Yamamoto, Koji Takagi, Atsushi Tanida, Kazuhito Ishii, Yoshie Arita, Hidekazu Kawanaka, Mitsunobu Kitamura, Hiroshige Murata, Yuusuke Hosokawa, Kouichi Akutsu, Hitoshi Takano, Keiji Tanaka, Kyoichi Mizuno, Wataru Shimizu

**P11.** Transradial approach for coronary angiography and interventions: a clinical nurse specialist's experience

V. Perović, S. Vučinić, D. Sagic

**P12.** Mitral valve prolapse and cerebral ischemia: nurse specialist experience in echocardiography

S. Vučinić, V. Perović, D. Sagic

**P13.** Six month outcomes of the rapid renal sympathetic denervation for resistant hypertension using the oneshot™ renal denervation system (RAPID) study

Nikos Werner, and Stefan Verheye for the RAPID Investigators

**P14.** Long term clinical outcomes of patients with coronary artery aneurysm after drug-eluting stent implantation

Cheol Woong Yu, Hyung Joon Joo, Rak Kyeong Choi, Jin Sik Park, Hyung Jong Lee, Jae Sang Kim, Young Jin Choi, Jae Hyung Park, Chul-Min Ahn, Soon Jun Hong, Do-Sun Lim

**P15.** An unusual case of un-crossable lesion

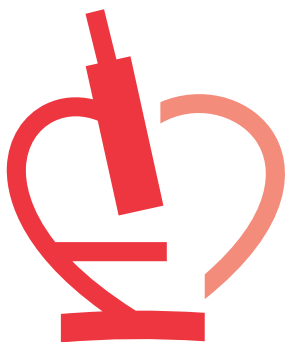
Aaron Wong, Paul Chiam

**Posters will be displayed in the Congress Area throughout the Meeting**

### Poster set up and removal

- Set up on Thursday, February 13th from 10.45 to 12.30
- Remove on Saturday, February 15th, by 14.00





**f**ondazione  
**e**vidence  
**O**NLUS

- ♥ coordinates and develops cardiovascular research
- ♥ contributes to the formation of professional figures in this field
- ♥ promotes meetings, seminars and conferences in accordance with the aims of the foundation



**[www.fondevidence.org](http://www.fondevidence.org)**

Fondazione Evidence  
per Attività e Ricerche Cardiovascolari - Onlus

Sede Legale: Via Donizetti, 30 - 20122 Milano - Italy  
Ph. +39.02.34535088 - Fax +39.02.34935412  
mail: [fondevidence@gmail.com](mailto:fondevidence@gmail.com)

# Scientific Information

## Language

English is the official language of the Congress.  
No simultaneous translation is available.



## Cases presentation and Posters

### Recorded procedures

Have a chance to show your best success or to discuss your worst complications in front of an outstanding panel in the Main Arena. Saturday morning will be devoted to cases review from Faculty and Attendance.

### Posters

Selected posters will be displayed in the Congress Area throughout the Meeting.

## Slide Center

A Slide Center will be available in the Congress Area. To allow a smooth running of sessions, Speakers are requested to contact this center and hand in their presentation at least **one hour before the beginning of their session** or the previous afternoon for the morning sessions.

TV direction and coordination by Mr. Sandro Alli

Coordination of technical equipment by Mr. Paolo Torreggiani - LVS Solution

Website by Airon Telematica

EDP management by Joy Solutions Expert srl



## General Information

### Organizing Secretariat

#### Victory Project Congressi

Via C. Poma, 2 - 20129 Milan - Italy

Phone: +39 02.89.05.35.24

Fax: +39 02.20.13.95

e-mail: [info@victoryproject.it](mailto:info@victoryproject.it)

### Secretariat on Site

Secretariat and Registration Desk at Congress Venue will be on duty from February 12 through 15.

#### Opening hours

February 12 5.00 pm - 7.00 pm

February 13 7.15 am - 8.30 pm

February 14 7.30 am - 8.30 pm

February 15 7.30 am - 1.00 pm

### Coffee and refreshment

Coffee and refreshment will be organized in the Exhibition area.

### Lunch Buffet for Exhibitors

Buffet lunch will be served in Room Tintoretto subject to presentation of the daily ticket.

### Symposia for Physicians, Industry Professionals, Fellows and Nurses

Symposia will be organized in Room Michelangelo, Room Tiziano, Room Giotto. Participation is subject to presentation of the daily ticket (food and beverages included), **to be picked up at the INFO POINT DESKS located at each floor.**

### Technical exhibition

An exhibition of scientific and technical equipment will be organized in the Congress Area.

### Certificate of attendance

A certificate of attendance will be given to all registered participants upon presentation of their badge at the Secretariat Desk on Saturday, February 15, 2014.

# General Information

## Registration fees

Physicians	1.000,00 €
Fellows, nurses, technicians	320,00 €
Industry Professionals (not having a stand)	1.000,00 €
Exhibitors (having a stand)	465,00 €

*(prices are in Euro and include VAT)*

### Full registration fee for Physicians, Industry Professionals, Fellows, Nurses and Technicians includes:

- Admission to all Scientific Sessions
- Entrance to the Exhibition
- All Symposia (lunch included)
- Coffee and refreshment
- Congress kit

### Registration fee for Exhibitors includes:

- Coffee and refreshment
- Entrance to the Exhibition
- Buffet lunch
- Congress kit

Only registered participants are allowed to attend scientific sessions. Participants are requested to wear their badge for all the Congress events.

## EBAC Accreditation

The Joint Interventional Meeting JIM 2014 is accredited by the European Board for Accreditation in Cardiology (EBAC) for 16 hours of external CME credits.

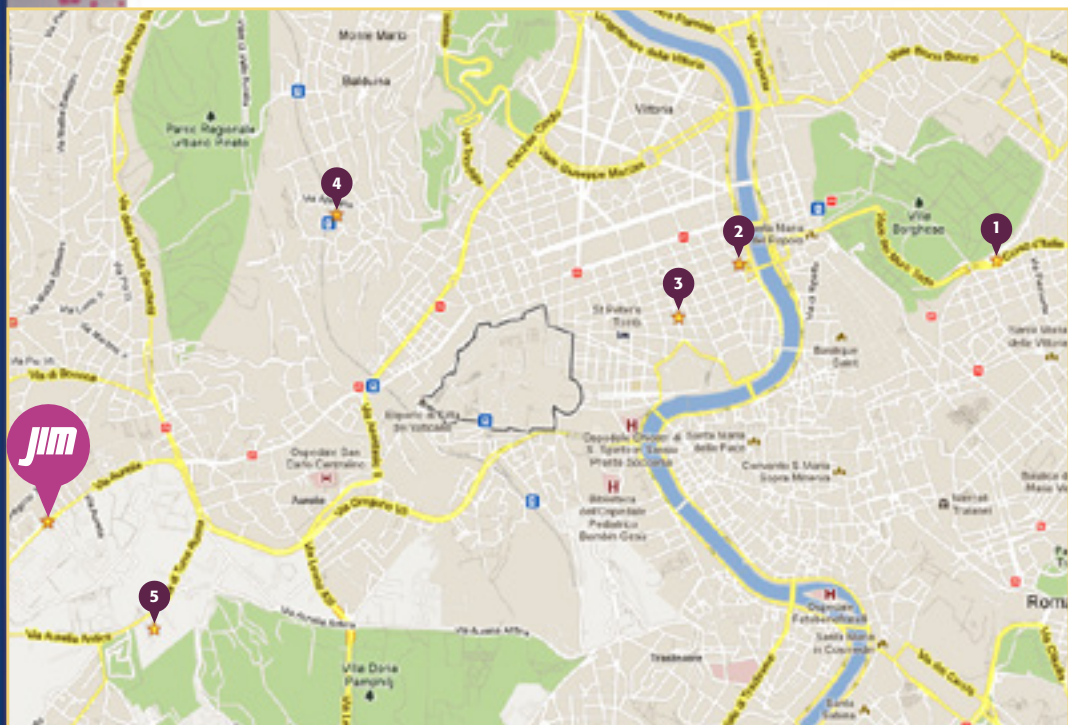


Each participant should claim only those hours of credit that have actually been spent in the educational activity.

EBAC works according to the quality standards of the European Accreditation Council for Continuing Medical Education (EACCME), which is an institution of the European Union of Medical Specialists (UEMS).

In compliance with EBAC/EACCME guidelines, all speakers/chairpersons participating in this program have disclosed or indicated potential conflicts of interest which might cause a bias in the presentations. The Organizing Committee/Course Director is responsible for ensuring that all potential conflicts of interest relevant to the Programme are declared to the audience prior to the CME activities.

## Hotel Map



**JIM**

**ERGIFE Palace Hotel** ☆☆☆

Via Aurelia, 619 - 00165 Roma

**1**

**NH Vittorio Veneto** ☆☆☆

Corso d'Italia, 1 - 00198 Roma

**2**

**NH Leonardo da Vinci** ☆☆☆

Via dei Gracchi, 324 - 00192 Roma

**3**

**Nh Giustiniano** ☆☆☆

Via Virgilio, 1 - 00193 Roma

**4**

**Grand Hotel Tiberio** ☆☆☆

Via Lattanzio, 51 - 00136 Roma

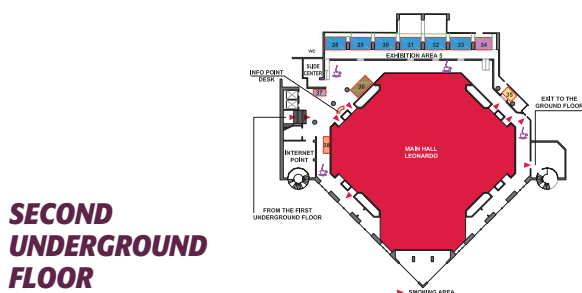
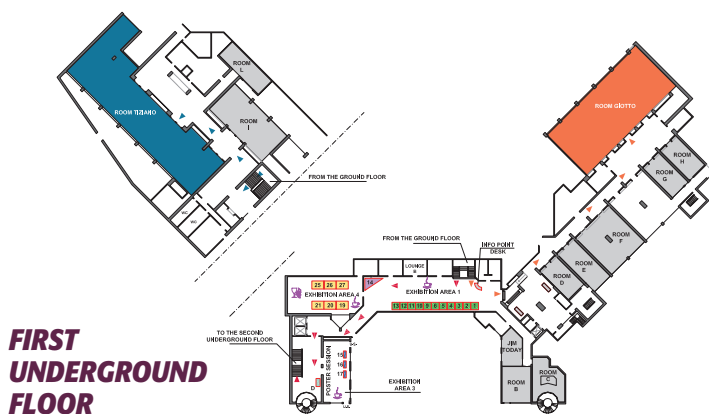
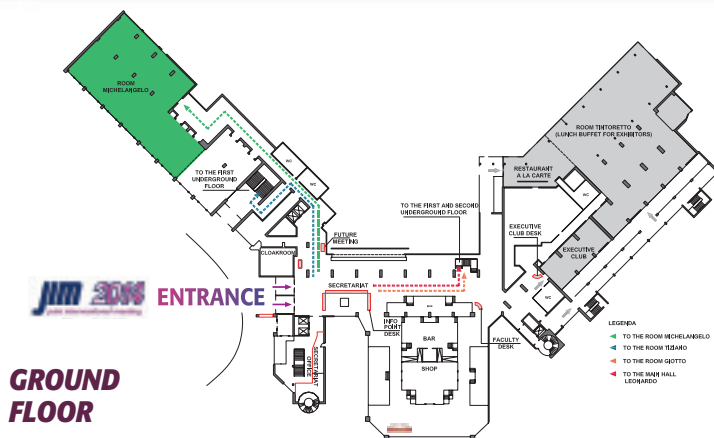
**5**

**Crowne Plaza Rome St. Peter's** ☆☆☆

Via Aurelia Antica, 415 - 00165 Roma

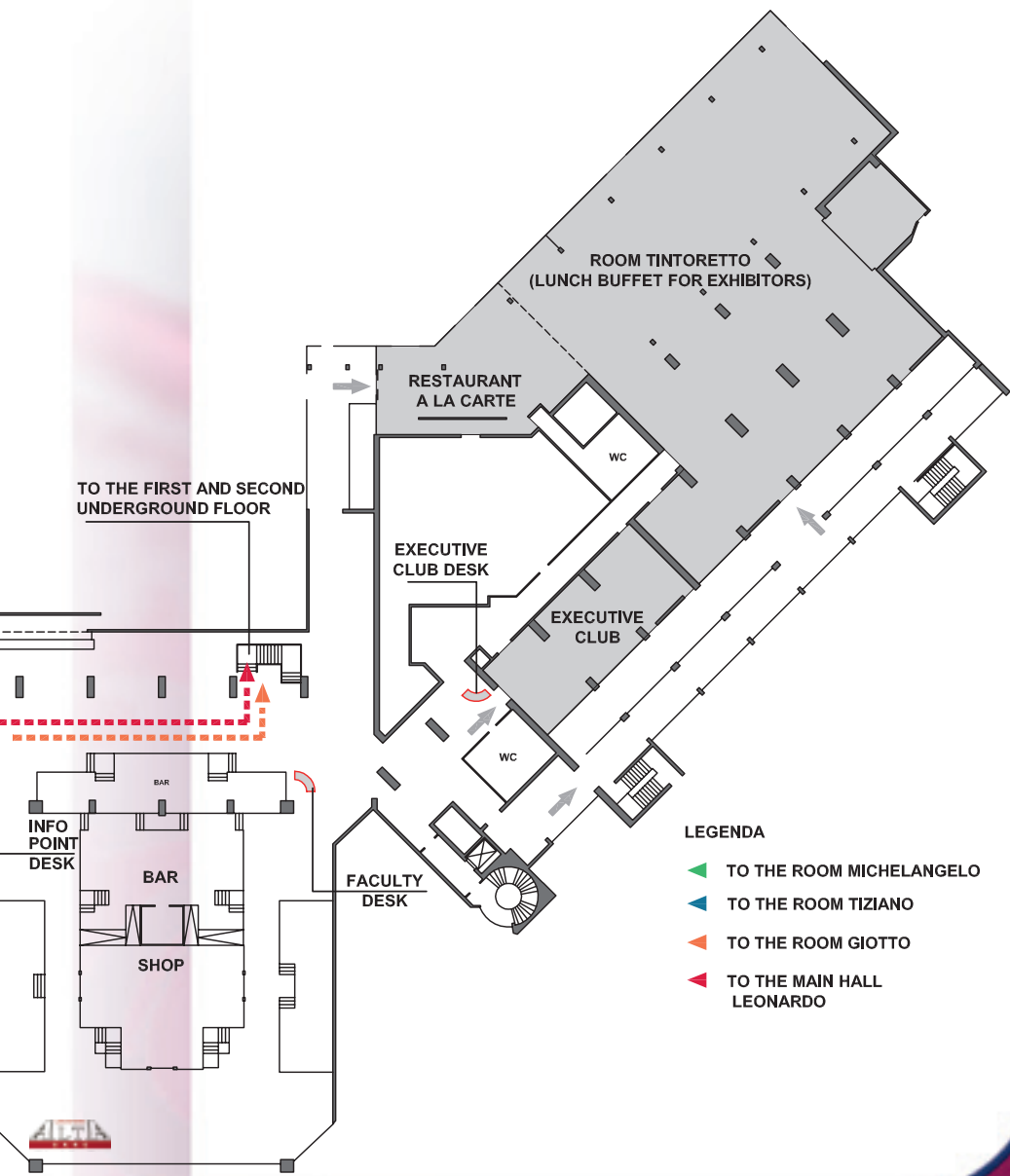


# Congress Area Map





# and Exhibition Map



- LEGENDA
- TO THE ROOM MICHELANGELO
  - TO THE ROOM TIZIANO
  - TO THE ROOM GIOTTO
  - TO THE MAIN HALL LEONARDO



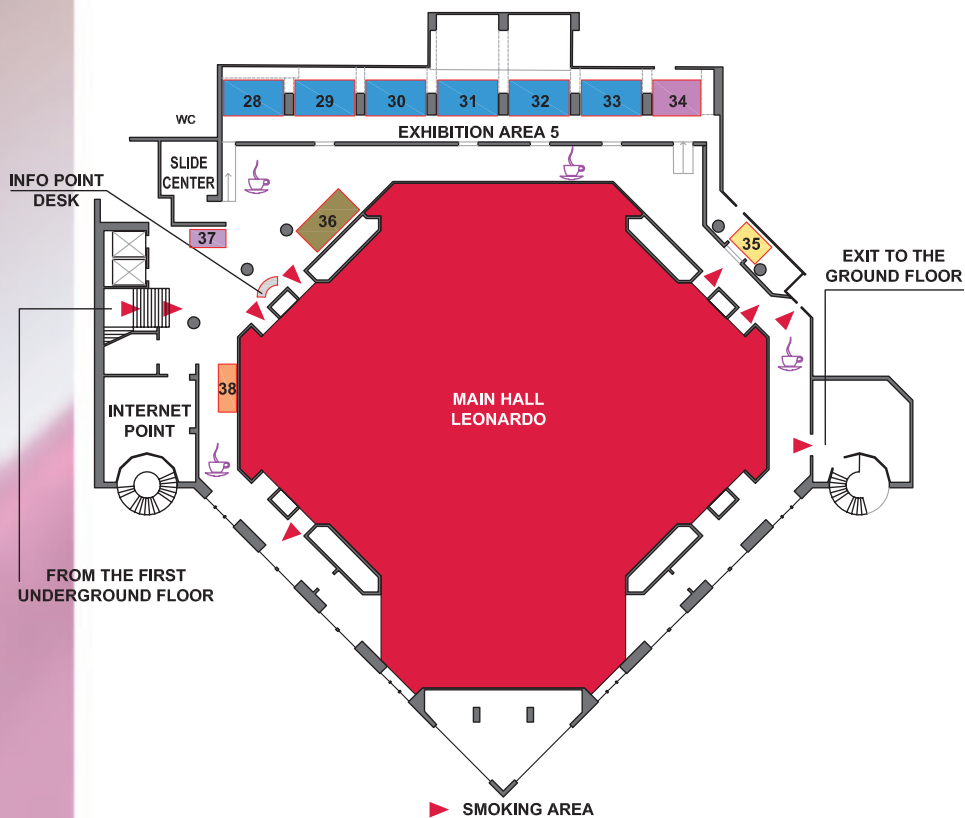
**FIRST  
UNDERGROUND  
FLOOR**

and Exhibition Map





## Meeting Rooms and Exhibition Map



### **SECOND UNDERGROUND FLOOR**

## ***Exhibitors***

<b>Exhibitor</b>	<b>Stand</b>
<b>AACHEN RESONANCE</b>	33
<b>ABBOTT VASCULAR</b>	29
<b>ABIOMED EUROPE</b>	34
<b>AB MEDICA</b>	33
<b>ALTA CARE LABORATORIES</b>	Ground floor
<b>ALVIMEDICA MEDICAL TECHNOLOGIES</b>	32
<b>A. MENARINI</b>	6
<b>BIOSENSORS INTERNATIONAL</b>	14
<b>BIOTRONIK</b>	37
<b>BOSTON SCIENTIFIC</b>	Lounge B
<b>CARDIO ALEX 2014</b>	15
<b>CARDIOLINK</b>	25
<b>CARDIONOVUM</b>	27
<b>CARDIOVASCULAR NEWS</b>	20
<b>CASCINA PASTORI - Wine Corner</b>	
<b>CORONADO MEDICAL</b>	19
<b>EBIT-AET, an ESAOTE Business Unit</b>	1 & 2
<b>EDWARDS LIFESCIENCES</b>	36
<b>ENDOTECH</b>	30

## ***Exhibitors***

<b>Exhibitor</b>	<b>Stand</b>
<b>ERCULES COMUNICAZIONI</b>	26
<b>FUTURE MEETINGS &amp; PROMOTIONAL MATERIAL</b>	Ground floor
<b>GEM</b>	D
<b>GISE - Società Italiana di Cardiologia Interventistica</b>	16
<b>JENA VALVE</b>	10
<b>JOHNSON &amp; JOHNSON MEDICAL Divisione Cordis</b>	31
<b>KARDIA</b>	11, 12 & 13
<b>MINERVA MEDICA</b>	21
<b>OCCLUTECH ITALIA</b>	38
<b>ORBUSNEICH</b>	3, 4 & 5
<b>PHILIPS</b>	9
<b>ROME HEART RESEARCH</b>	17
<b>TERUMO EUROPE</b>	28
<b>WISEPRESS MEDICAL BOOKSHOP</b>	35

# Acknowledgments

## Thanks to:

AACHEN RESONANCE  
AB MEDICA  
ABBOTT VASCULAR  
ABIOMED EUROPE  
ACIST MEDICAL SYSTEMS  
ALTA CARE LABORATORIES  
ALVIMEDICA MEDICAL  
TECHNOLOGIES  
A. MENARINI  
ASTRAZENECA  
BIOSENSORS INTERNATIONAL  
BIOTRONIK  
BOSTON SCIENTIFIC  
CARDIAC DIMENSIONS  
CARDIONOVUM  
CORONADO MEDICAL  
CORREVIO  
COVIDIEN  
DELTA HOSPITAL  
DIRECT FLOW MEDICAL  
EBIT AET, an Esaote Business Unit  
EDWARDS LIFESCIENCES  
ENDOTECH

ELIXIR MEDICAL CORPORATION  
GEM  
INSPIREMD  
JENA VALVE  
JOHNSON & JOHNSON  
MEDICAL - Divisione Cordis  
KARDIA  
KONA MEDICAL  
MEDTRONIC  
MERIL LIFE SCIENCES  
MITRALIGN  
OCCLUTECH ITALIA  
ORBUSNEICH  
PHILIPS  
RECOR MEDICAL  
STENTYS  
ST. JUDE MEDICAL ITALIA  
SYMETIS  
TERUMO EUROPE  
THE MEDICINES COMPANY  
VALTECH CARDIO  
VOLCANO EUROPE



fondazione  
evidence  
ONLUS



*(updated to January 31, 2014)*

## *Major Sponsors*

The Directors of the Course particularly wish to thank for their support in the organization of JIM 2014:



Boston  
Scientific





## Major Sponsors

They also express their gratitude to:





# **Jim** joint interventional meeting **2014** international meeting

## **Organizing Secretariat**

### **VICTORY PROJECT CONGRESSI**

Via C. Poma, 2 – 20129 Milano – Italy

Phone +39 02 89 05 35 24

Fax +39 02 20 13 95

e-mail [info@victoryproject.it](mailto:info@victoryproject.it)

**DON'T MISS**

# **Jim** **2015** joint interventional meeting

ROME, ITALY • FEBRUARY 12 - 14, 2015